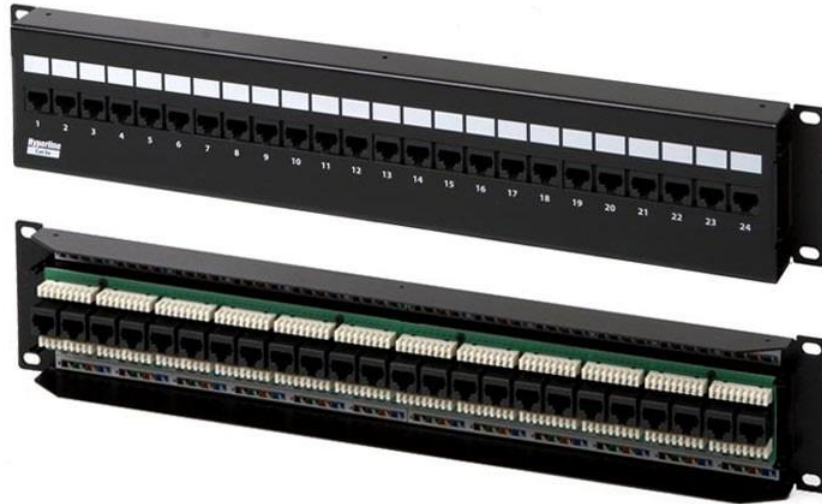


## Front Access Wall Mount Patch Panel, 12 and 24 ports RJ-45, Category 5e



### Specifications

Meets ANSI/TIA/EIA-568-B.2 Category 5e requirements  
Meets TIA/EIA TSB-40  
Meets ISO/IEC Generic Cabling Standard 11801:2002 ed.2.0  
Meets CENELEC Generic Cabling Standard EN50173 1:2002

### Description

Smooth rear side of panel for convenient mounting to the wall  
This patch panel is designed for 22-26 AWG solid conductors  
Height is 1U  
Horizontal termination

### Materials

IDC: PC UL94V-0  
PCB: FR-4 1.6 mm (0.06") thick, 2 layers  
Contacts: 0.35 mm (0.014") phosphor bronze with 1.27 micron (50 microinches) gold plating on contact area  
Metal housing: 1.2 mm (0.04") thick metal

### Construction characteristic features

Modern design and mounting simplicity  
Color marking of conductors according to T568B and T568A  
Color and numeral marking of IDC modules on the front side of the panel

Numeral marking on the cover  
Space for additional marking  
Hyperline patch cord usage provides the best connection  
Dual IDC contacts provide minimal crosstalk  
110 type punch down tool is used for cable termination

### Electrical characteristics

According to UL 1863  
Current rating: 1.5 A Max.  
Voltage rating: 150 V  
Contact Resistance: 20 mOhm  
Insulation Resistance: 500 MOhm  
Dielectric Withstand Voltage: 1000 VAC RMS, 60Hz/1min

### Package

Hyperline patch panel  
Plastic cable ties

### Ordering

**PPW-12-8P8C-C5e-FR** Front access wall mount **patch panel**, 12 ports **RJ45**, category 5e

**PPW-24-8P8C-C5e-FR** Front access wall mount **patch panel**, 24 ports **RJ45**, category 5e